



**Kempsters**  
ESTATE AGENTS

Priestley Court Palmers Drive  
Grays RM17 5RX



Asking price  
**£169,000**



**Situated in a much sought after warden controlled retirement complex is this one bedroomed flat which is offered with no onward chain. Features include a bright lounge, kitchen, double bedroom shower room, stair lift from communal hallway, residents lounge, well tended communal gardens plus residents parking. 360 VIRTUAL TOUR AVAILABLE**



- Double glazing
- Lounge 15'2 x 9'6
- Kitchen 9'8 x 6'6
- Bedroom 12'8 x 9'3
- 'Nurse call' system
- Well tended communal gardens
- Residents parking
- Residents communal lounge
- No onward chain

### ENTRANCE HALL

Coved and textured ceiling, access to loft space, built-in storage cupboard, power point, fitted carpet.

### LOUNGE

15'2 x 9'6 (4.62m x 2.90m)

Double glazed square bay window to rear, coved and textured ceiling, wall mounted electric heater, entry phone, power points, fitted carpet.

### KITCHEN

9'8 x 6'6 (2.95m x 1.98m)

Double glazed window to rear, coved and textured ceiling, range of base and eye level units with contrasting work surfaces, inset single bowl sink unit, space for cooker, fitted extractor hood, space for fridge/freezer and washing machine, wall mounted electric heater, two large built-in storage cupboards, tiled walls, power points, vinyl floor covering.

### BEDROOM

12'8 x 9'3 (3.86m x 2.82m)

double glazed square bay window to front, coved and textured ceiling, range of fitted wardrobes to one wall, matching chest of drawer units and headboard, wall mounted electric heater, power points, fitted carpet.

### SHOWER ROOM

Opaque double glazed window to side, coved and smooth plastered ceiling, suite comprising shower unit, wash hand basin and low flush toilet, wall mounted electric heater, tiled walls, vinyl floor covering.

### EXTERIOR

### LEASE DETAILS AND SERVICE CHARGES

Approx 70 years remaining on lease

Service charges: Approx £150 per calendar month







Priestley Court  
Administration  
Office →









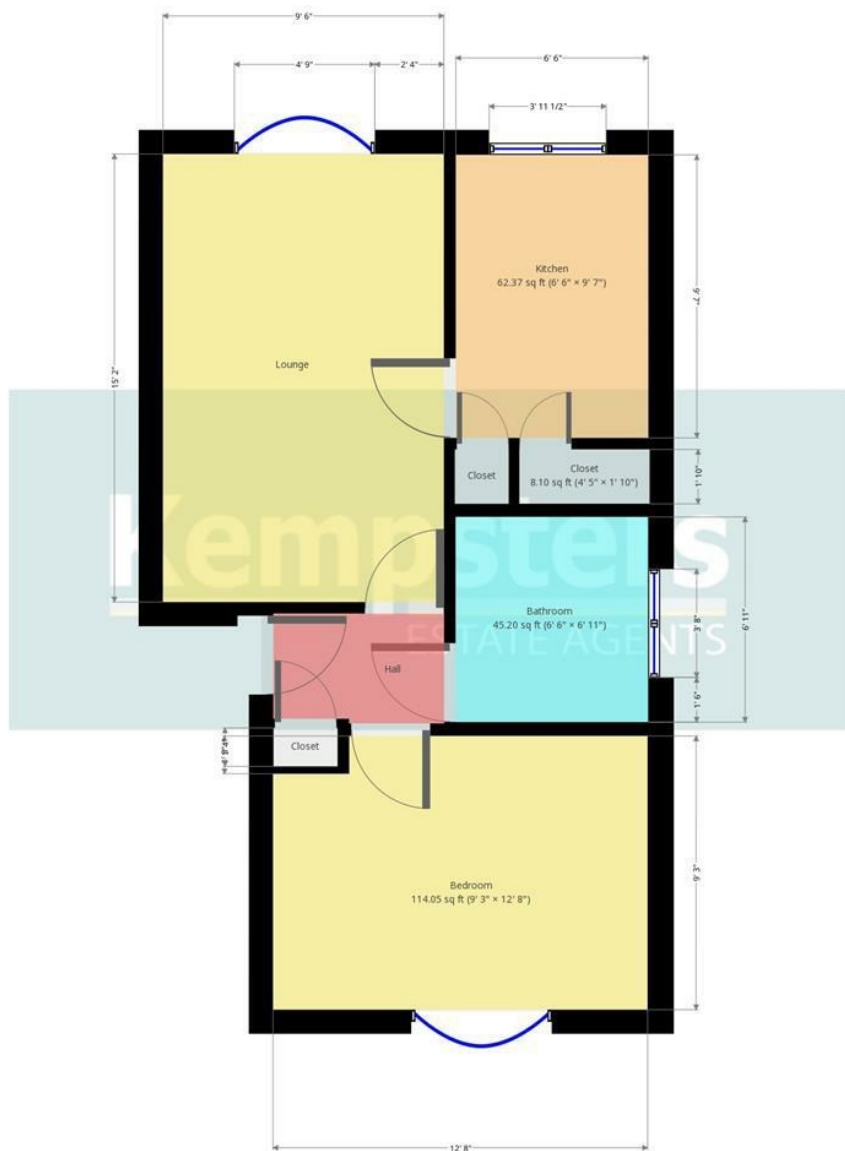
NO BALL  
GAMES

PRIESTLEY COURT









Kempsters Estate Agents take no responsibility for any error, omission, misstatement or use of data shown. This plan is for illustrative purposes only and whilst every attempt has been made to ensure the accuracy of the floorplan shown, all measurements, positioning, fixtures, fittings and any other data shown are an approximate ...

Disclaimer: This brochure is for illustrative purposes only and, whilst every attempt has been made to ensure accuracy. Kempsters Estate Agents Ltd take no responsibility for any error, omission, mis-statement or use of any of the information shown. No appliances or main services have been checked.

37 Orsett Road Grays, Essex RM17 5DS • Tel: 01375 394 732 • Email: sales@kempsters.com

