



**Kempsters**  
ESTATE AGENTS

201 Danbury Crescent  
South Ockendon RM15 5XB

4

2

2

Offers in excess of  
**£395,000**



**This lovely four bedroom detached house benefits from a double storey rear extension to provide spacious and well planned accommodation throughout. Features include two large receptions, recently fitted kitchen, en suite to bedroom one, stylish bathroom, approx 35' x 34' rear garden, garage via own driveway plus views over playing field at rear. 360 VIRTUAL TOUR AVAILABLE.**



- Lounge 22'4 x 9'8
- Dining room 16'1 x 11'3
- Fitted kitchen 17'4 x 9'11/2 with integrated appliances
- Bedroom one 11'9 x 9'8 with en suite
- Bedroom two 17'8 x 6'10
- Bedroom three 9'6 x 9'1 (plus wardrobes)
- Bedroom four 9'11 x 7'11 (plus wardrobes)
- Stylish bathroom
- Rear garden approx 35' x 34'
- Garage via own driveway





#### ENTRANCE PORCH

Opaque double glazed windows to front and sides, smooth plastered ceiling, laminate floor. Partially glazed door leads to:

#### DINING ROOM

16'1 x 11'3 (4.90m x 3.43m)

Double glazed window to front, coved and smooth plastered ceiling, access to first floor, radiator, power points, tile effect laminate floor. Open plan to:

#### LOUNGE

22'4 x 9'8 (6.81m x 2.95m)

Double glazed window and double glazed bi-fold doors lead to rear garden, coved and smooth plastered ceiling, radiator, power points, tile effect laminate floor.

#### KITCHEN

15'4 x 9' x 11'2 (4.67m x 2.74m x 3.40m)

Double glazed window to front, coved and smooth plastered ceiling with inset spotlights, under stairs storage cupboard, range of base and eye level units with granite work surfaces, inset single bowl sink unit, integrated double oven, microwave, hob with extractor canopy above, washing machine, dishwasher and tumble dryer, space for large fridge/freezer, radiator, power points, tile effect laminate floor.

#### FIRST FLOOR LANDING

Coved and smooth plastered ceiling, access to loft space, power point, fitted carpet.

#### BEDROOM ONE

11'9 x 9'8 (3.58m x 2.95m)

Double glazed window to rear, coved and smooth plastered ceiling with inset spotlights, radiator, power points, laminate floor.

#### EN SUITE

Opaque double glazed window to side, smooth plastered ceiling with inset spotlights, extractor fan, suite comprising shower cubicle, vanity unit with inset wash hand basin and low flush toilet, heated towel rail, tiled walls, tiled floor.

#### BEDROOM TWO

17'8 x 6'10 (5.38m x 2.08m)

Double glazed window to rear, coved and smooth plastered ceiling with inset spotlights, radiator, power points, laminate floor.

#### BEDROOM THREE

9'6 x 9'1 (plus wardrobes) (2.90m x 2.77m (plus wardrobes))

Double glazed window to front, coved and smooth plastered ceiling, built-in double wardrobe, radiator, power points, laminate floor.

#### BEDROOM FOUR

9'11 x 7'11 (plus wardrobes) (3.02m x 2.41m (plus wardrobes))

Double glazed window to front, coved and smooth plastered ceiling, built-in double wardrobe, radiator, power points, laminate floor.



#### BATHROOM

Smooth plastered ceiling with inset spotlights, 'skylight window', suite comprising bath with independent shower unit above, shower screen, vanity unit with inset wash hand basin and low flush toilet, extractor fan, shaver point, heated towel rail, tiled floor.

#### REAR GARDEN

in excess of 35' x in excess of 34' (in excess of 10.67m x in excess of 10.36m)

Immediate patio area, remainder laid to lawn with fence surround, personal door to garage.

#### FRONT GARDEN

Laid to patio with shrub border and fence surround.

#### ATTACHED GARAGE

With power and light, approached via own driveway.





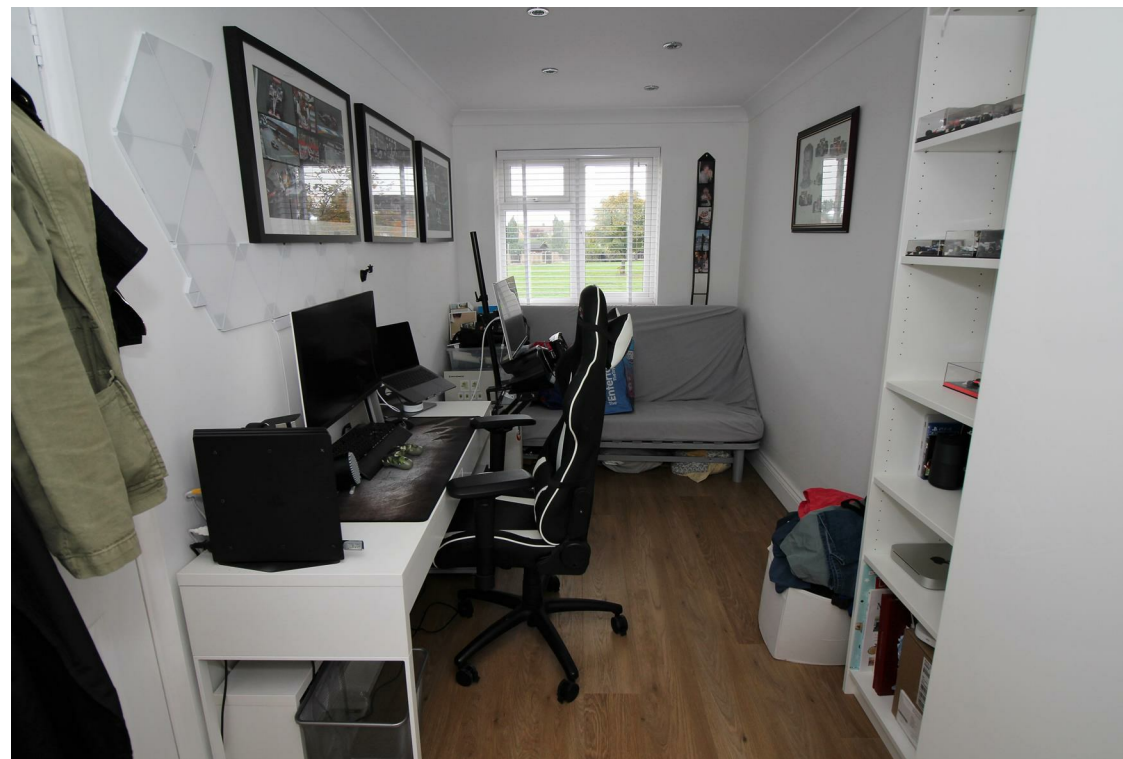




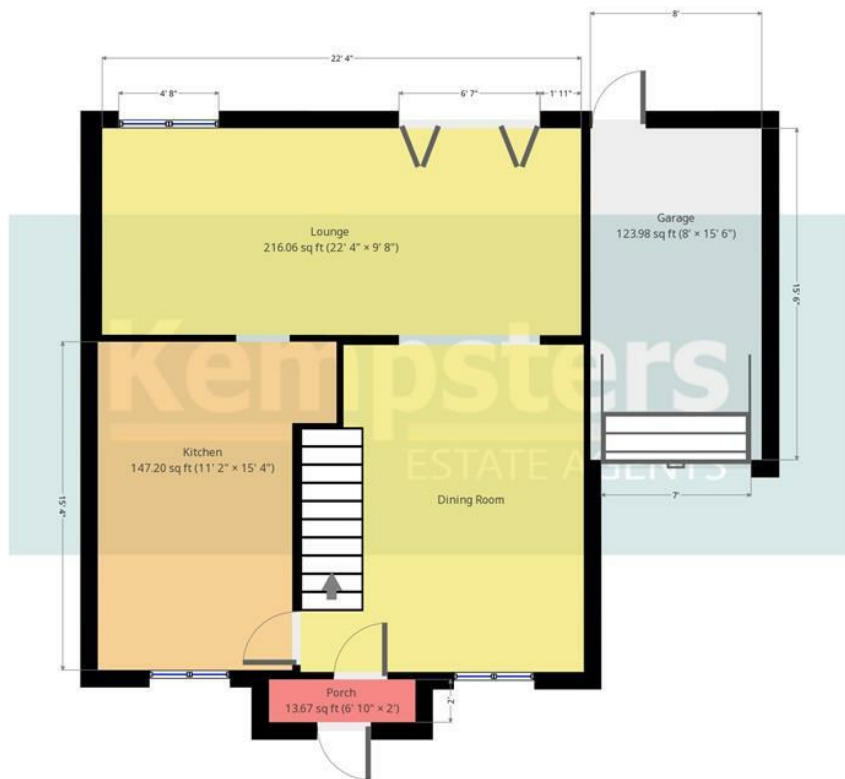




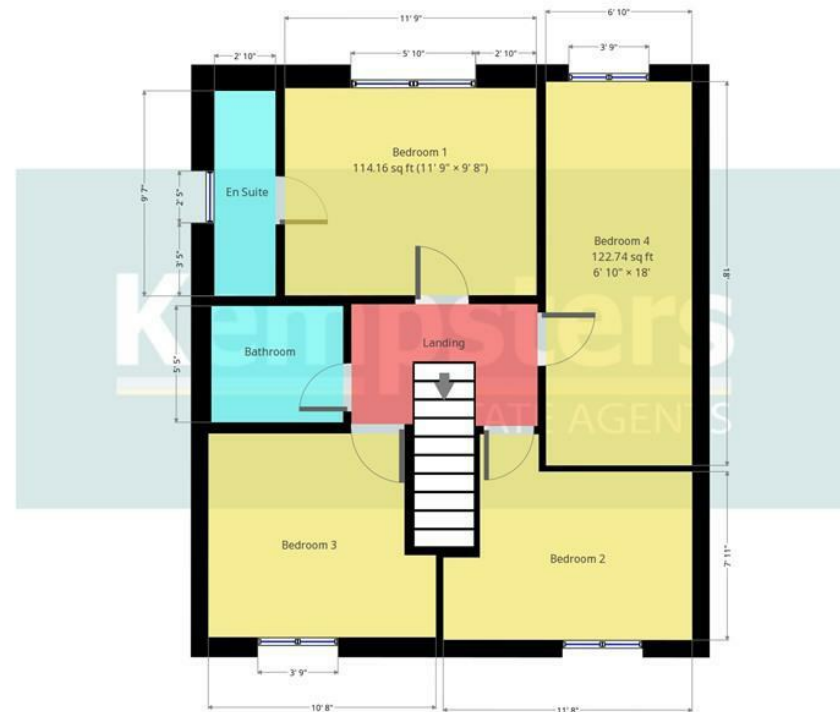








Kempsters Estate Agents take no responsibility for any error, omission, misstatement or use of data shown. This plan is for illustrative purposes only and whilst every attempt has been made to ensure the accuracy of the floorplan shown, all measurements, positioning, fixtures, fittings and any other data shown are an approximate...



Kempsters Estate Agents take no responsibility for any error, omission, misstatement or use of data shown. This plan is for illustrative purposes only and whilst every attempt has been made to ensure the accuracy of the floorplan shown, all measurements, positioning, fixtures, fittings and any other data shown are an approximate...

Disclaimer: This brochure is for illustrative purposes only and, whilst every attempt has been made to ensure accuracy. Kempsters Estate Agents Ltd take no responsibility for any error, omission, mis-statement or use of any of the information shown. No appliances or main services have been checked.

37 Orsett Road Grays, Essex RM17 5DS • Tel: 01375 394 732 • Email: [sales@kempsters.com](mailto:sales@kempsters.com)

