



Kempsters
ESTATE AGENTS

55 Haig Road
Orsett Heath Grays RM16 4XL



Asking price
£275,000

This lovely three/four bedroom house is situated in a popular location and is offered with no onward chain. Features include a bright lounge, fitted kitchen, conservatory, study/bedroom four, stylish bathroom and west facing rear garden. 360 VIRTUAL TOUR AVAILABLE.



- Lounge 14'11 x 13'3
- Fitted kitchen 11'1 x 10'8
- Conservatory 14'6 x 9'7
- Study/bedroom four 8'5 x 8'4
- Bedroom one 11'4 x 10'6
- Bedroom two 11'10 x 9'10
- Bedroom three 8'11 x 8'4
- Stylish bathroom
- West facing rear garden
- No onward chain

ENTRANCE PORCH

Built-in storage cupboard. Opaque double glazed multi panel door leads to:

ENTRANCE HALL

Smooth plastered ceiling, access to first floor, under stairs storage area, radiator, quality vinyl flooring.

GROUND FLOOR CLOAKROOM

Opaque double glazed window to front, textured ceiling, suite comprising wash hand basin and low flush toilet, quality vinyl flooring. Double

LOUNGE

14'11 x 13'3 (4.27m x 3.35m x 3.96m x 0.91m)

Double glazed window to front, coved and smooth plastered ceiling, feature fireplace with inset coal effect fire, radiator, power points, quality vinyl flooring.

FITTED KITCHEN

11'1 x 10'8 (3.38m x 3.25m)

Double glazed window and half double glazed door lead to conservatory, smooth plastered ceiling, range of base and eye level units with contrasting work surfaces, inset single drainer sink unit, integrated oven, microwave, hob, canopy with extractor and fridge/freezer, space for washing machine, concealed gas central heating boiler, power points, quality vinyl flooring.

STUDY/BEDROOM FOUR

8'5 x 8'4 (2.57m x 2.54m)

Double glazed window to rear, smooth plastered ceiling, radiator, power points, fitted carpet.

CONSERVATORY

14'6 x 9'7 (4.42m x 2.92m)

Double glazed windows and double glazed French doors lead to rear garden, wall mounted electric heater, power points, quality vinyl flooring.

FIRST FLOOR LANDING

Smooth plastered ceiling, access to loft space, built-in storage cupboard, built-in airing cupboard, fitted carpet.

BEDROOM ONE

11'4 x 10'6 (into wardrobes) (3.45m x 3.20m (into wardrobes))

Double glazed window to front, textured ceiling, range of fitted wardrobes with mirrored doors, radiator, power points, painted floorboards.



BEDROOM TWO

11'10 x 9'10 (3.61m x 3.00m)

Double glazed window to rear, textured ceiling, built-in cupboard, radiator, power points, fitted carpet.

BEDROOM THREE

8'11 x 8'4 (2.72m x 2.54m)

Double glazed window to front, textured ceiling, radiator, power points, painted floorboards.

BATHROOM

Opaque double glazed window to rear, smooth plastered ceiling, suite comprising bath with independent shower unit above, vanity unit with inset wash hand basin and low flush toilet, heated towel rail, tiling to bath area, quality vinyl flooring.

REAR GARDEN

Small lawn area with shrub border, brick paved patio area and possible parking space accessed via double gates at rear.

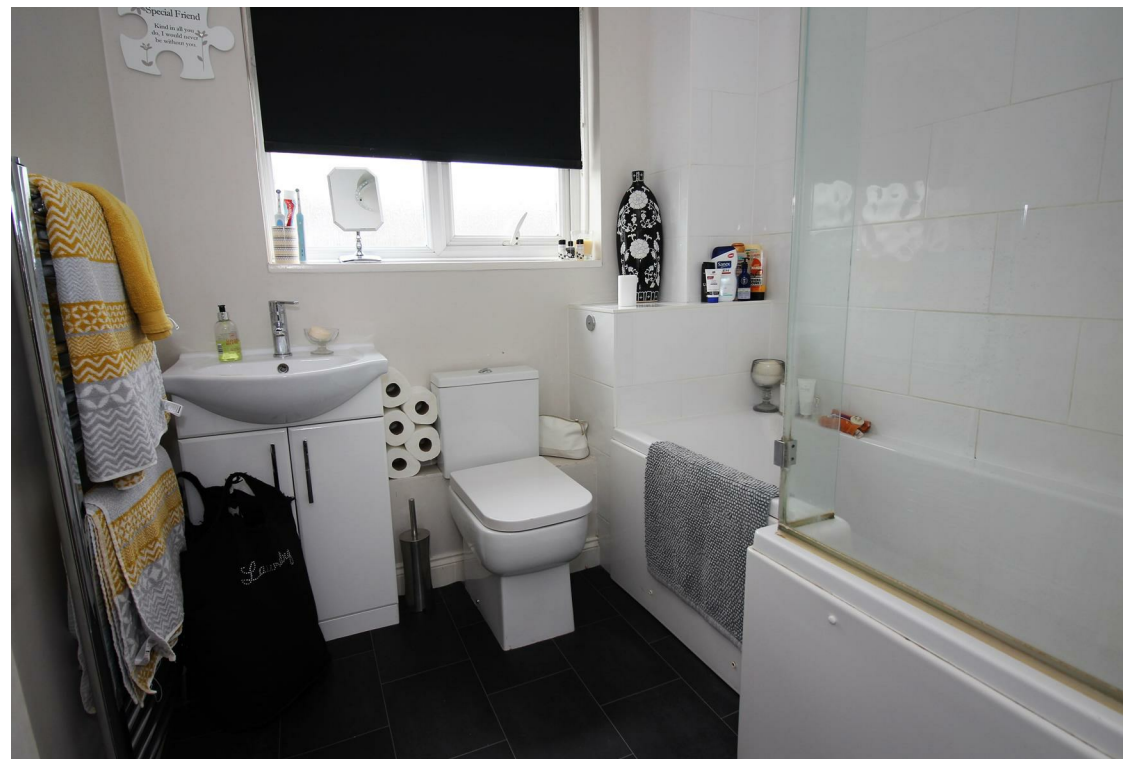
FRONT GARDEN

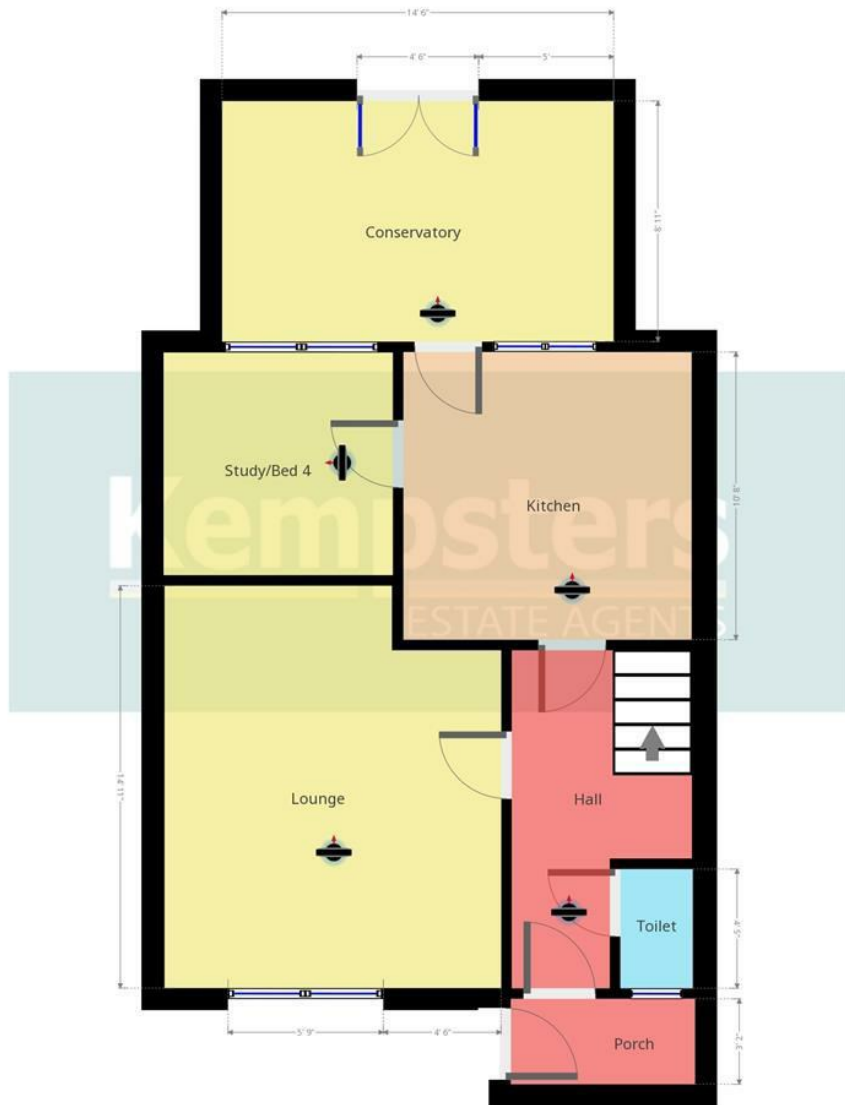
Laid with decorative stone, mature shrubs, outside shed.











Kempsters Estate Agents take no responsibility for any error, omission, misstatement or use of data shown. This plan is for illustrative purposes only and whilst every attempt has been made to ensure the accuracy of the floorplan shown, all measurements, positioning, fixtures, fittings and any other data shown are an approximate...



Kempsters Estate Agents take no responsibility for any error, omission, misstatement or use of data shown. This plan is for illustrative purposes only and whilst every attempt has been made to ensure the accuracy of the floorplan shown, all measurements, positioning, fixtures, fittings and any other data shown are an approximate...

Disclaimer: This brochure is for illustrative purposes only and, whilst every attempt has been made to ensure accuracy. Kempsters Estate Agents Ltd take no responsibility for any error, omission, mis-statement or use of any of the information shown. No appliances or main services have been checked.

37 Orsett Road Grays, Essex RM17 5DS • Tel: 01375 394 732 • Email: sales@kempsters.com

